

Goat Anti-Arylsulfatase B Antibody
Peptide-affinity purified goat antibody
Catalog # AF1114a**Specification**

Goat Anti-Arylsulfatase B Antibody - Product Information

Application	WB, IHC, E
Primary Accession	P15848
Other Accession	NP_942002 , 411
Reactivity	Human
Host	Goat
Clonality	Polyclonal
Concentration	100ug/200ul
Isotype	IgG
Calculated MW	59687

Goat Anti-Arylsulfatase B Antibody - Additional Information**Gene ID** 411**Other Names**

Arylsulfatase B, ASB, 3.1.6.12, N-acetylgalactosamine-4-sulfatase, G4S, ARSB

DilutionWB~~1:1000
IHC~~1:100~500
E~~N/A**Format**

0.5 mg IgG/ml in Tris saline (20mM Tris pH7.3, 150mM NaCl), 0.02% sodium azide, with 0.5% bovine serum albumin

Storage

Maintain refrigerated at 2-8°C for up to 6 months. For long term storage store at -20°C in small aliquots to prevent freeze-thaw cycles.

Precautions

Goat Anti-Arylsulfatase B Antibody is for research use only and not for use in diagnostic or therapeutic procedures.

Goat Anti-Arylsulfatase B Antibody - Protein Information**Name** ARSB**Function**

Removes sulfate groups from chondroitin-4-sulfate (C4S) and regulates its degradation (PubMed:19306108).

Involved in the regulation of cell adhesion, cell migration and invasion in colonic epithelium (PubMed:19306108). In the central nervous system, is a regulator of neurite outgrowth and neuronal plasticity, acting through the control of sulfate glycosaminoglycans and neurocan levels (By similarity).

Cellular Location

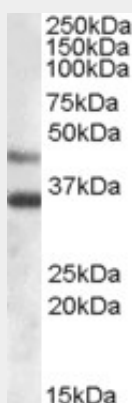
Lysosome {ECO:0000250|UniProtKB:P50429}. Cell surface {ECO:0000250|UniProtKB:P50429}

Goat Anti-Arylsulfatase B Antibody - Protocols

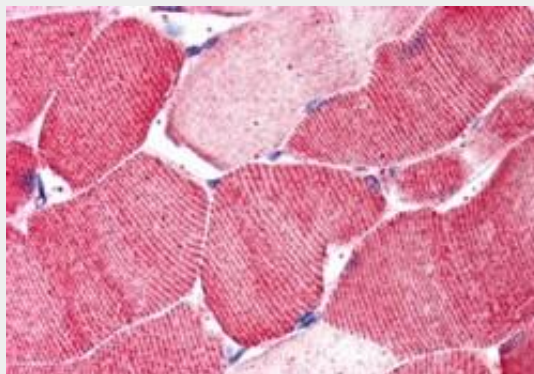
Provided below are standard protocols that you may find useful for product applications.

- [Western Blot](#)
- [Blocking Peptides](#)
- [Dot Blot](#)
- [Immunohistochemistry](#)
- [Immunofluorescence](#)
- [Immunoprecipitation](#)
- [Flow Cytometry](#)
- [Cell Culture](#)

Goat Anti-Arylsulfatase B Antibody - Images



AF1114a (0.03 µg/ml) staining of Human Heart lysate (35 µg protein in RIPA buffer). Primary incubation was 1 hour. Detected by chemiluminescence.



AF1114a (5 µg/ml) staining of paraffin embedded Human Skeletal Muscle. Steamed antigen retrieval with citrate buffer pH 6, AP-staining.

Goat Anti-Arylsulfatase B Antibody - Background

Arylsulfatase B encoded by this gene belongs to the sulfatase family. The arylsulfatase B homodimer hydrolyzes sulfate groups of N-Acetyl-D-galactosamine, chondroitin sulfate, and dermatan sulfate. The protein is targeted to the lysosome. Mucopolysaccharidosis type VI is an autosomal recessive lysosomal storage disorder resulting from a deficiency of arylsulfatase B. Two alternatively spliced transcript variants encoding distinct isoforms have been found for this gene.

Goat Anti-Arylsulfatase B Antibody - References

Variation at the NFATC2 Locus Increases the Risk of Thiazolinedione-Induced Edema in the Diabetes REduction Assessment with ramipril and rosiglitazone Medication (DREAM) Study. Bailey SD, et al. Diabetes Care, 2010 Jul 13. PMID 20628086.

Personalized smoking cessation: interactions between nicotine dose, dependence and quit-success genotype score. Rose JE, et al. Mol Med, 2010 Jul-Aug. PMID 20379614.

Gene-centric association signals for lipids and apolipoproteins identified via the HumanCVD BeadChip. Talmud PJ, et al. Am J Hum Genet, 2009 Nov. PMID 19913121.

Hippocampal atrophy as a quantitative trait in a genome-wide association study identifying novel susceptibility genes for Alzheimer's disease. Potkin SG, et al. PLoS One, 2009 Aug 7. PMID 19668339.

Cell-bound IL-8 increases in bronchial epithelial cells after arylsulfatase B silencing due to sequestration with chondroitin-4-sulfate. Bhattacharyya S, et al. Am J Respir Cell Mol Biol, 2010 Jan. PMID 19346317.